

TOMAS  
TILLBERG  
DESIGN

Presented To  
Villa Vie Residences





m/v ODYSSEY (Braemar)  
Villa Vie Residences

We create iconic, alluring,  
functional, captivating, ship  
interiors - by design.

1	DECK 9 NEW OBSERVATION DECK
2	DECK 8 OBSERVATORY LOUNGE
3	DECK 8 POOL DECK
3A	DECK POOL BAR
7	DECK CULINARY CENTER
9	DECK THE GRILLE / OUTDOOR
12	DECK NEW BUSINESS CENTER
14/14A	DECK CONFERENCE ROOM / BOARDROOM
15	DECK RESIDENTS' RECEPTION DESK
22	GOLF SIMULATOR
ALL CABIN / SUITE TYPES	

m/v ODYSSEY (Braemar)

Villa Vie Residences



A passionate group of professionals who are dedicated to creating and curating stunning interior designs into captivating and functional spaces that redefine human experiences.



**Nedgé Louis-Jacques** has accumulated a broad-based knowledge and expertise with nearly 35 years in the industry. After acquiring a Bachelor degree in Architecture at City University of New York, Nedgé worked at the Rockefeller Group in New York.

Her professional journey takes her to Miami (the cruise capital of the world) where she worked at Royal Caribbean Cruise Lines for eight years as a dedicated Manager of Design overseeing fleet maintenance and renovation projects for five ships while establishing annual budgets. Nedgé carried out multi-million-dollar refurbishments from the design process to the installation phase.



**Carolina Espinosa** is a passionate interior designer with a Masters in Interior Architecture and a Cruise Ship and Super Yacht Design certification from Florida International University. Alongside her incredible team at Tomas Tillberg Design, Carolina currently designs incredible interior spaces for marine projects worldwide.

With a collective vision for excellence, our team of interior designers, architects, and managers bring years of expertise and passion to every project, ensuring that each design reflects elegance, comfort, and innovation. .



# 1

## DECK 9      **NEW OBSERVATION DECK**

m/v ODYSSEY (Braemar)  
Villa Vie Residences













**Entzo**

Dekton - Natural Collection

**REQUEST**



# DECK 9 OBSERVATION DECK









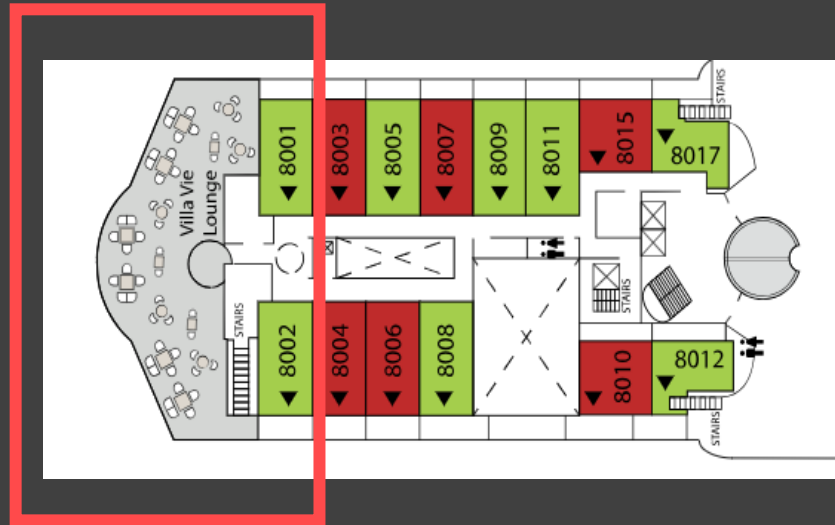


Exclusive wall art  
by Tomas Tillberg



2

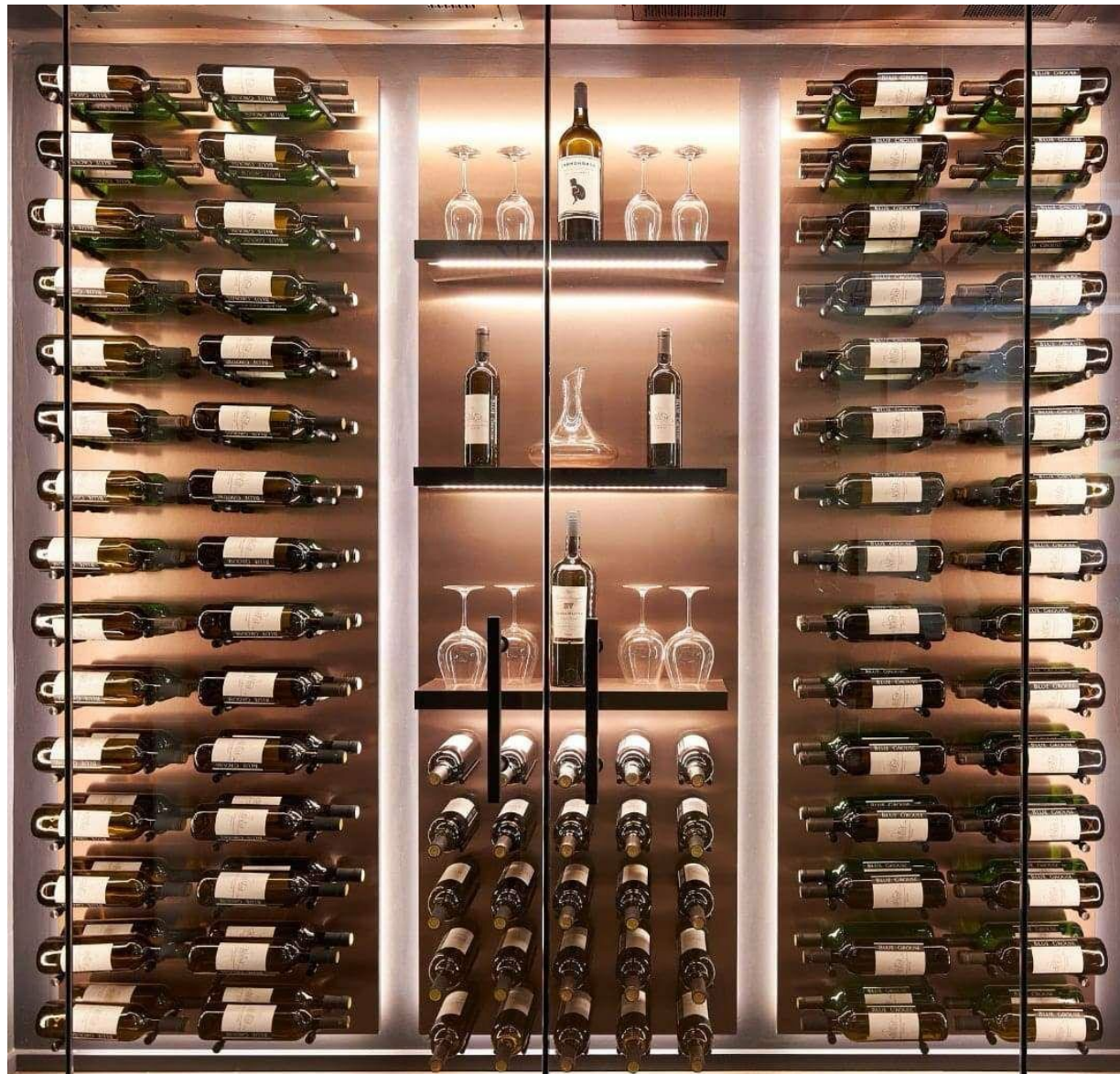
# DECK 8 OBSERVATORY LOUNGE (Villa Vie Lounge)







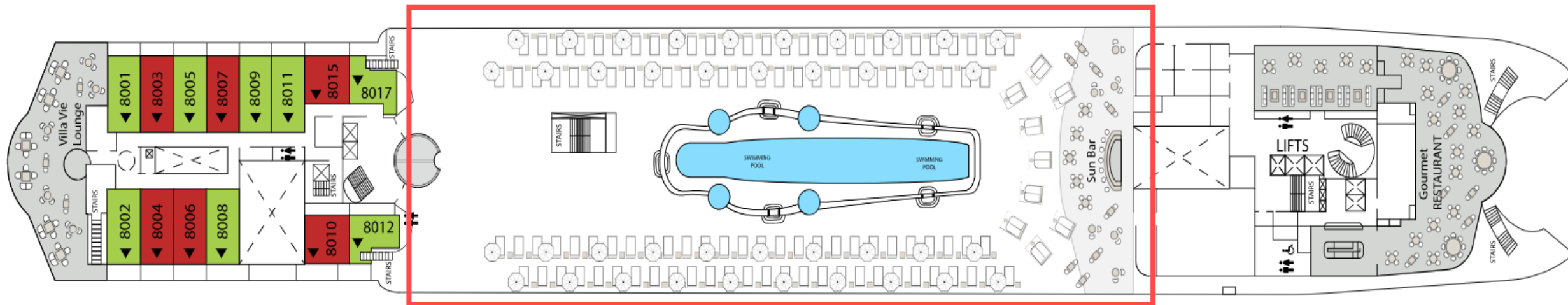






# 3/3A

## DECK 8 POOL DECK & POOL BAR





























onte: divulgação







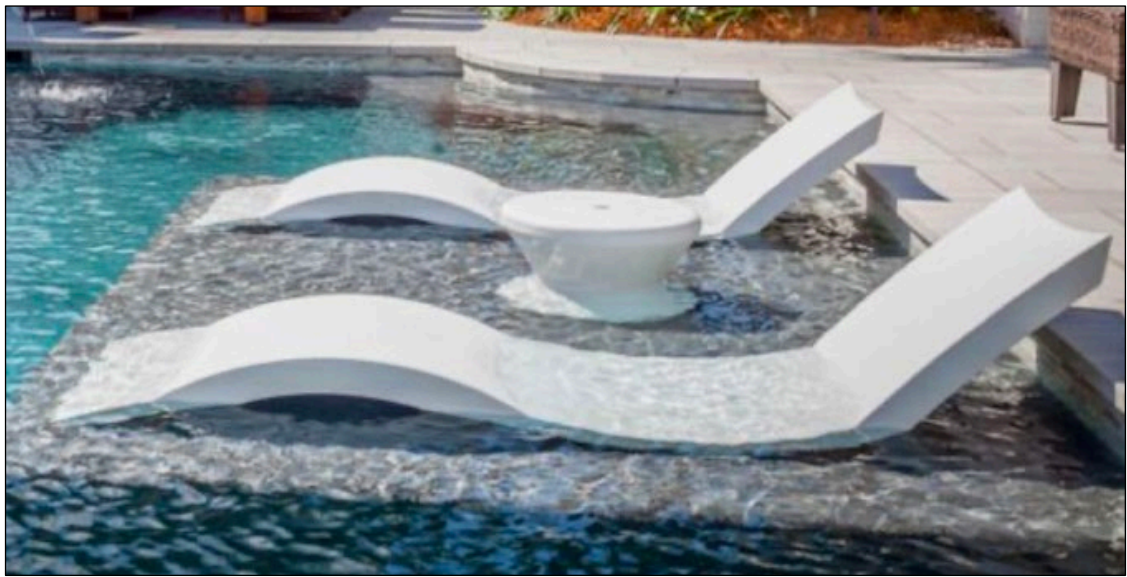
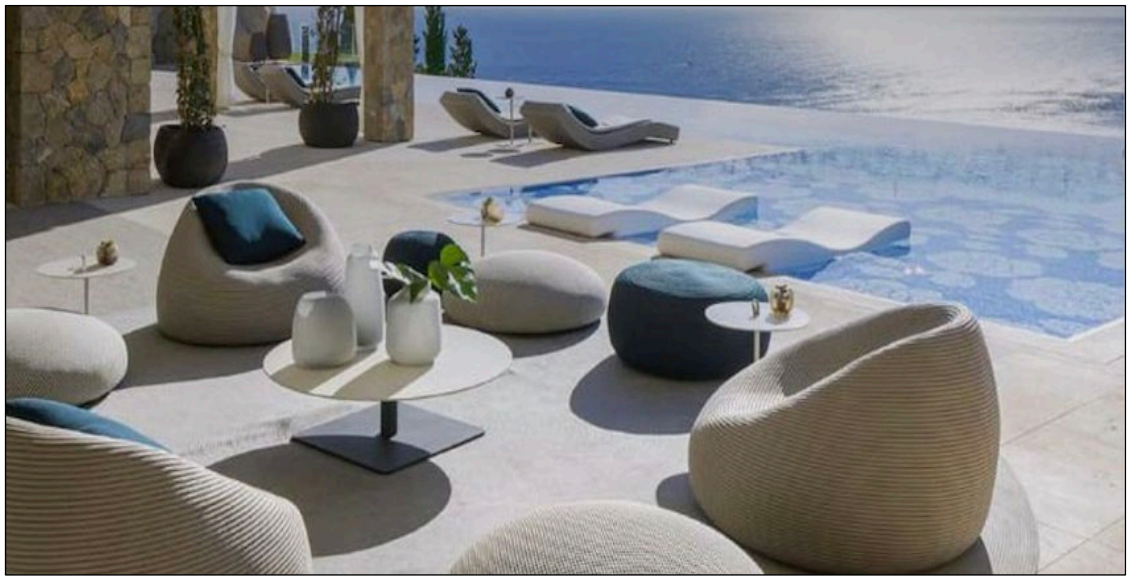




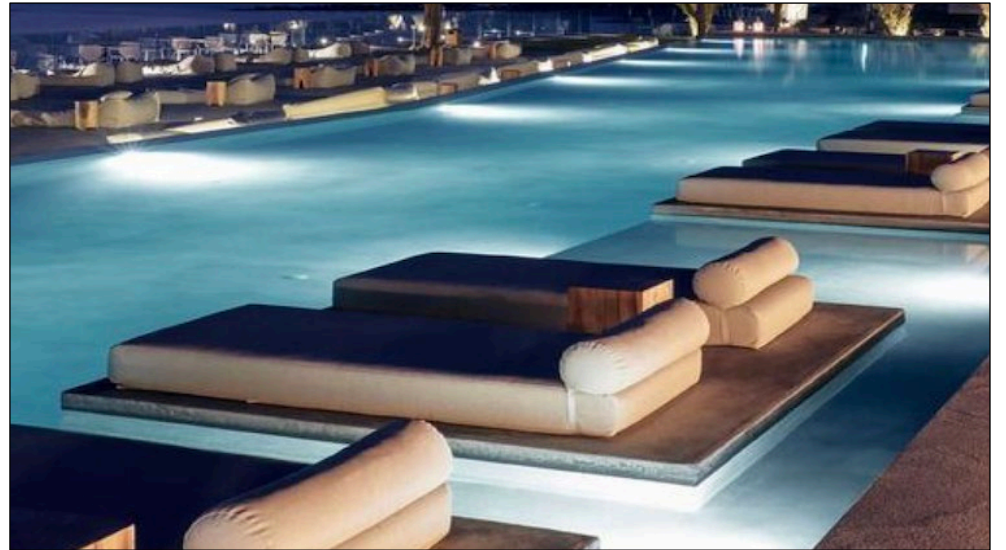
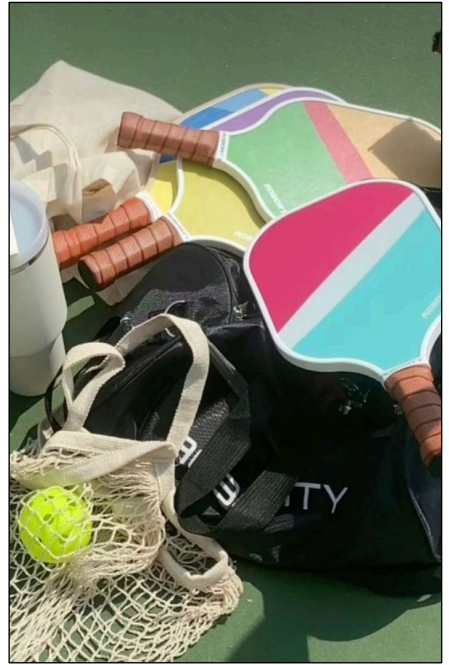
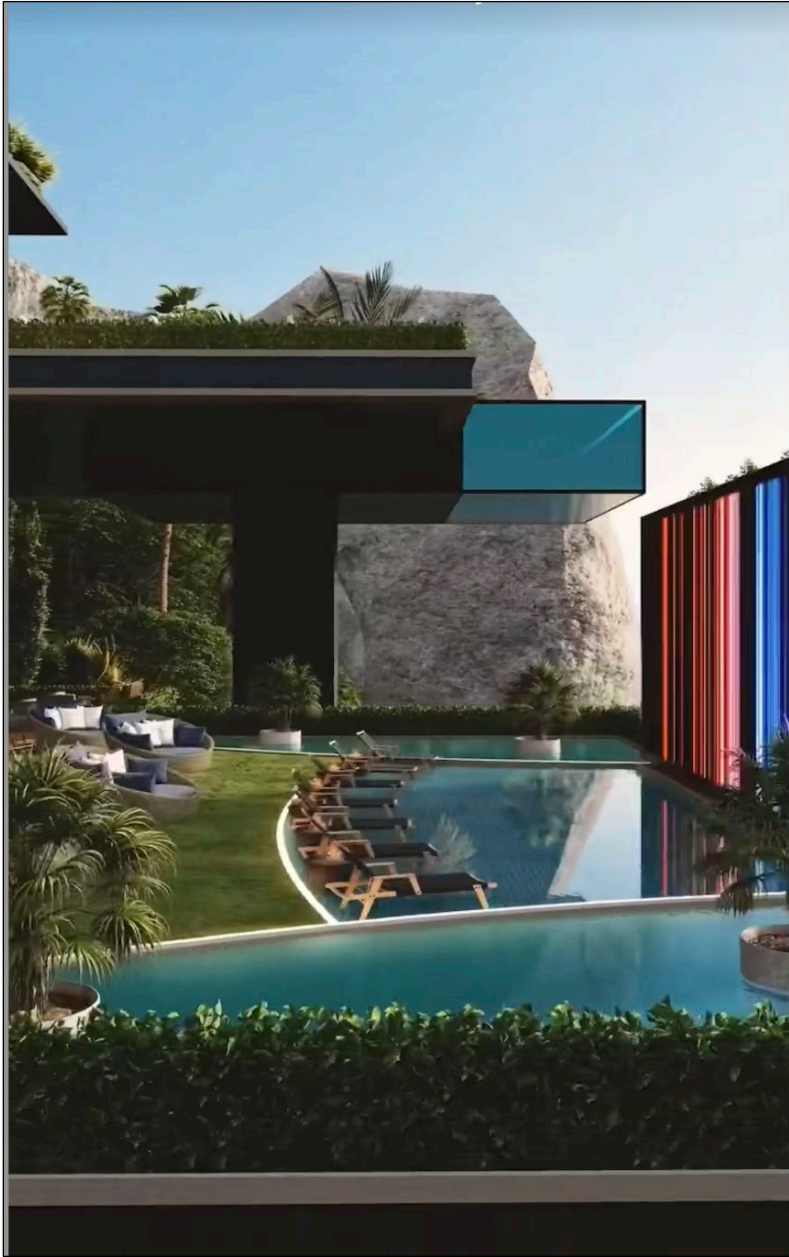














7

DECK 6

**CULINARY CENTER**

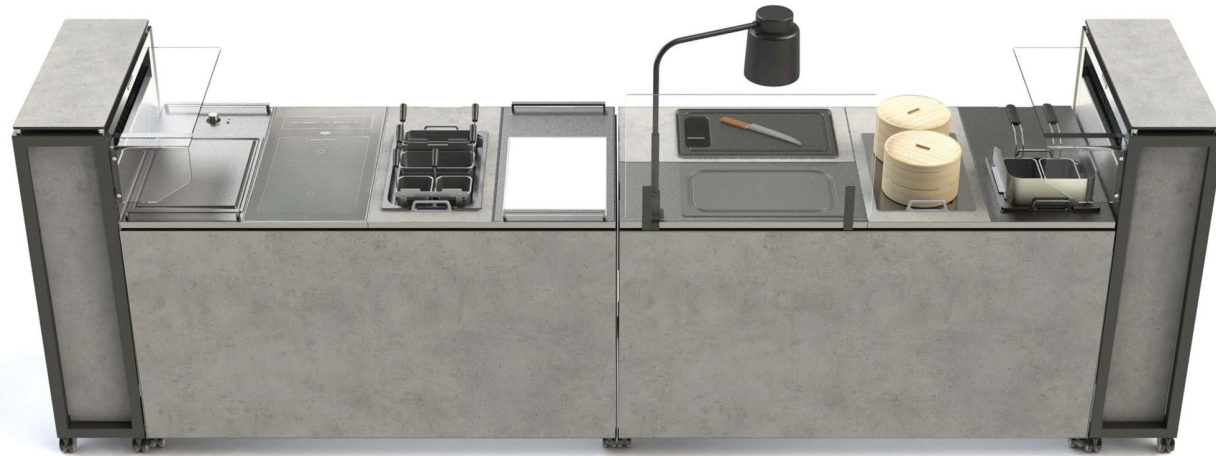
m/v ODYSSEY (Braemar)

Villa Vie Residences

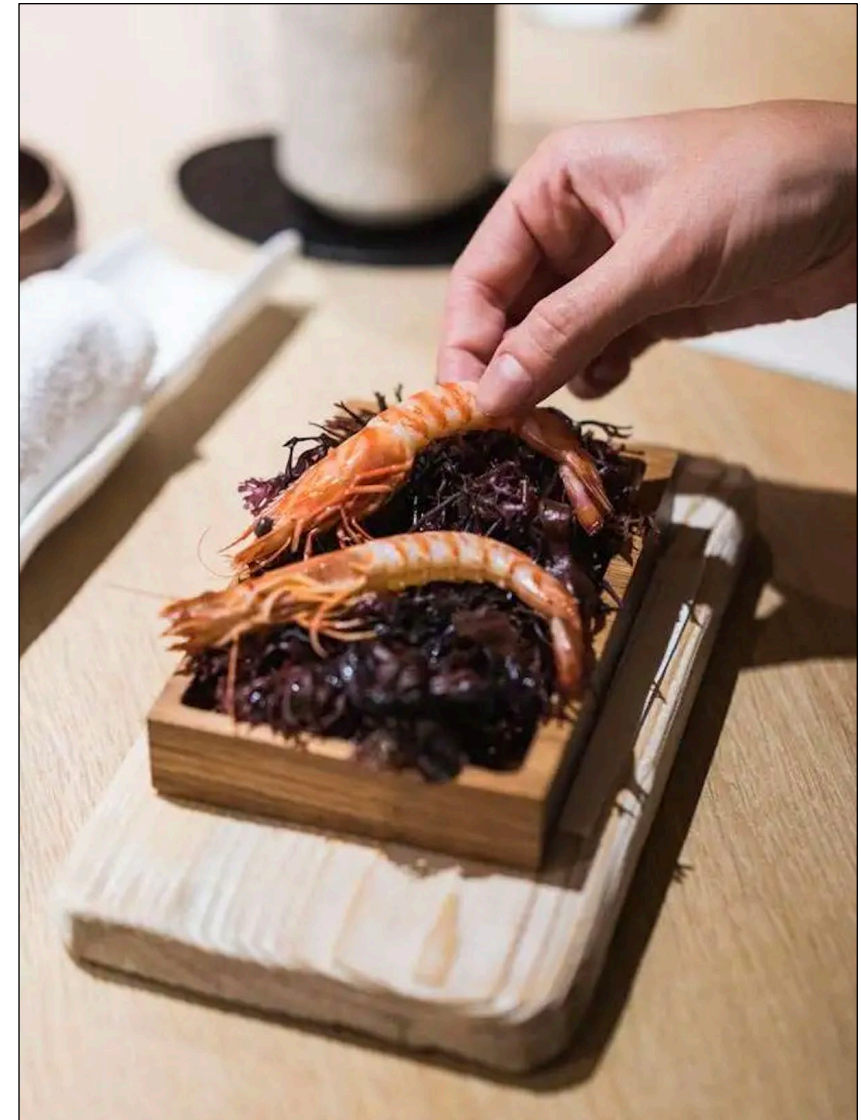




## SPACE EFFICIENT CULINARY STATION CONCEPT

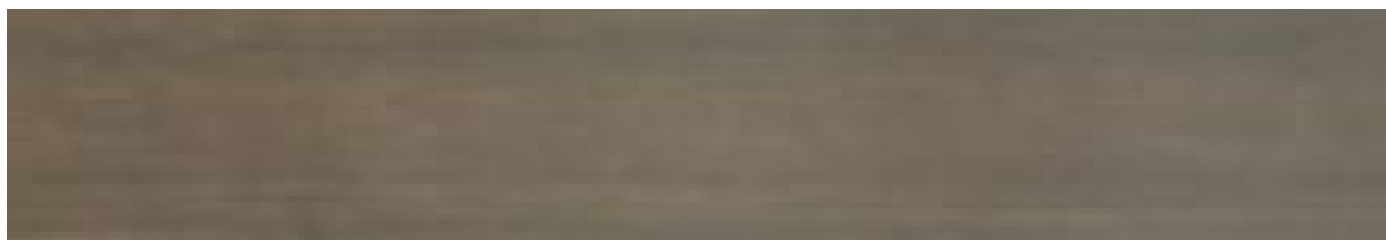
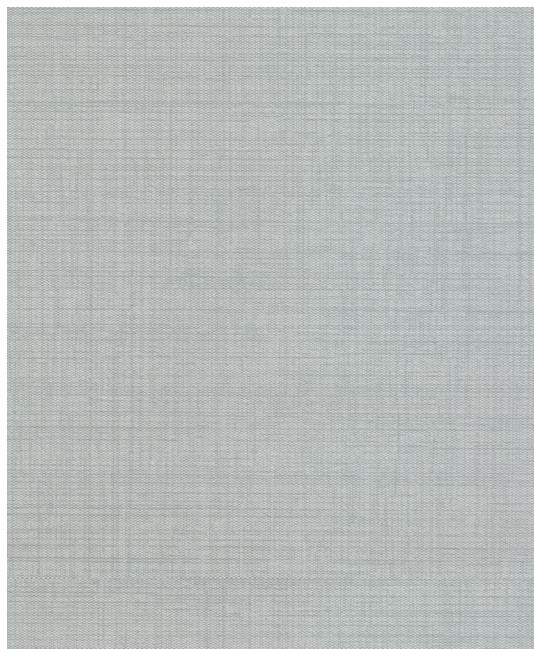






Culinary Station Ideas

















Culinary Station Ideas















Teacher is at the front

Layout & Décor Ideas







Tasting area  
along with  
Culinary stations





Tasting area along  
with Culinary  
stations







